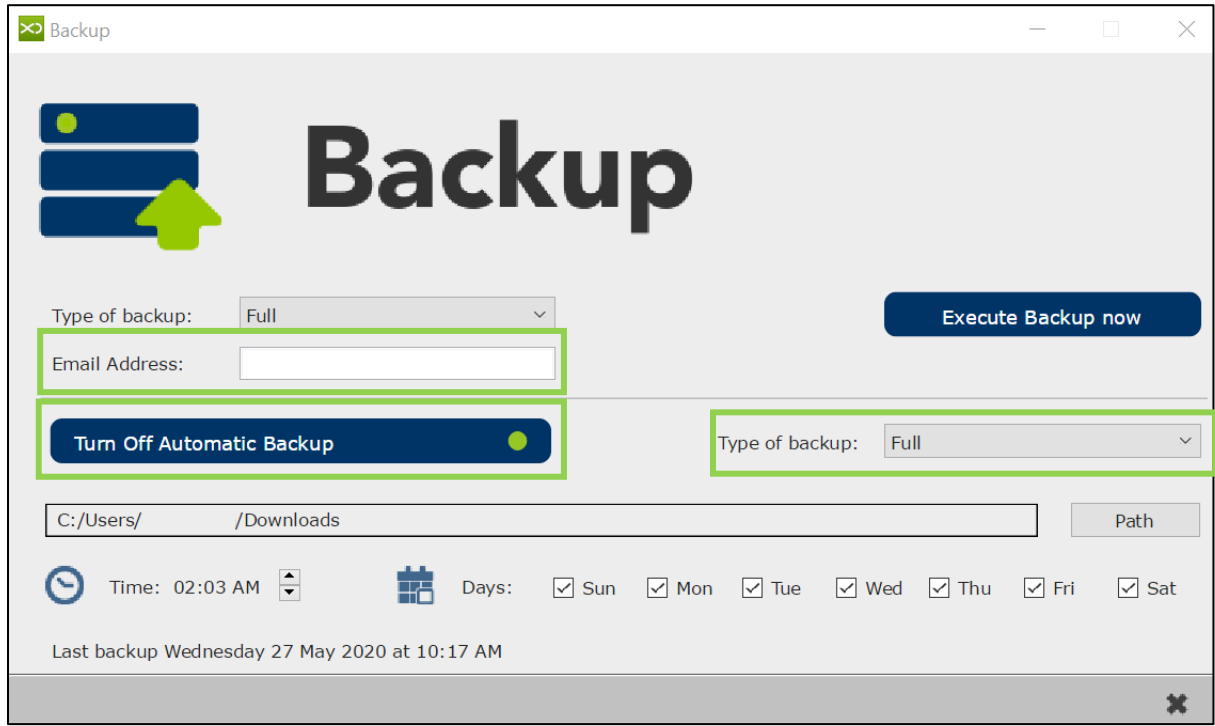


# XDENT Data Backup Instructions

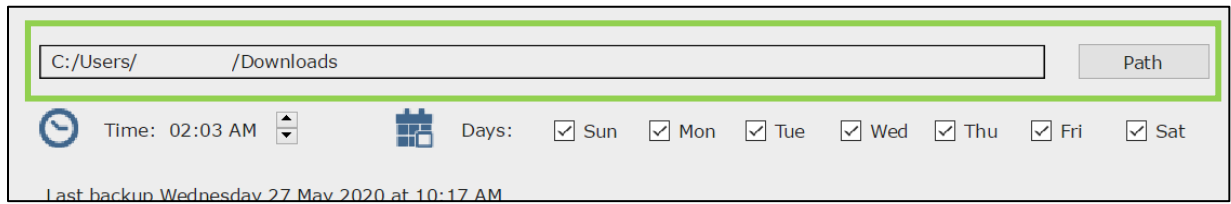
Navigate to Operations, and Backup on the XDENT menu.



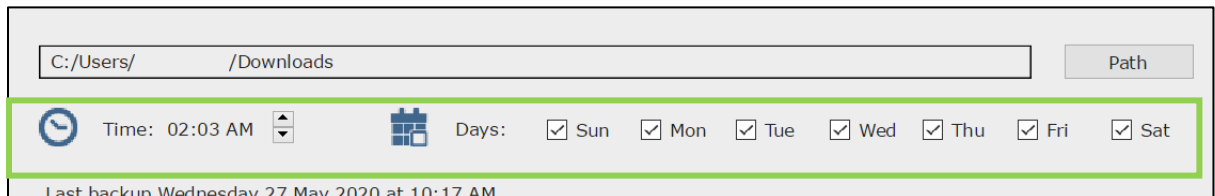
**Step 1:** Turn on Automatic backup, add your email address and select Full as the type of backup.



**Step 2:** Select the path to which you want to save your backup to be saved to.



**Step 3:** Select the time that you would prefer to run the backup (preferably out of working hours). Ensure that the server remains powered on if an after-hours backup time is selected.



**Optional:** Run a backup as and when you desire it to run